



Bledium magellanicum

Rio Fontaine  
Woodland on N. bank at  
crossing point.

4/2/99





Hypochaeris radicata

Calela Maria, dune strip, top  
of wood near corrals.

19/1/99





ID Notes

Involucral bracts in several series.

Pappus hairs ~ 7mm long

Aster vahlis

Caleta Maria

Banks of Azopardo river close to coast in clear-cropped lowland grassland

16/1/99

Habitat Coastal grassland.













Geum parviflorum

Caleta Maria

forest edge / grassy track  
below rocks, altitude ~ 20m

22/2/99



Idiotes

flowers with 6 white petals  
in 2 whorls of 3.  
leaves w 2 pale stripes on  
underside.



Luzuriaga marginata

Rio Fontaine, Empetrum  
heathland - edge of eroded  
Inssock





Carpha alpina

Azopardo, North bank.

In sedge-msh pasture, close to shore.

15/2/99



cushion and mat-forming plants.



Calobanthe  
gluterosis

dry grassland



Azorella  
caespitosa

river shingle,  
dry open grassland,  
mud.



Sagina  
procumbens

open grassland,  
sand, mud,



Anagallis artemifolia

creeping rather than  
mat-forming; throughout  
short grassland





Perezia magellanica

Rio Fontaine  
rocky outcrop south of river,  
above lakes.

30/1/99





Senecio magellanicus

Caleta Maria  
grassland on shingle close to coast.

25/1/99





Blechnum penha-marina

Caleta Inana

granstand

17/1/99





Macrachaenium gracile  
Rio Azopardo  
woodland on slope  
S of river  
22/1/99





Id notes

Sepals + petal - different numbers.  
plant hairy, leaves deeply divided.

Ranunculus peduncularis

Caleta Maria, coastal grassland -  
wetter areas near river.

16/1/99

wet grassland, coastal.





Epilobium australe

Caleta Maria  
Sheep pen top of beach, in wet  
flushes

31/1/99





Caltha appendiculata

Rio Fontaine, Sphagnum  
bog.

21/1/99





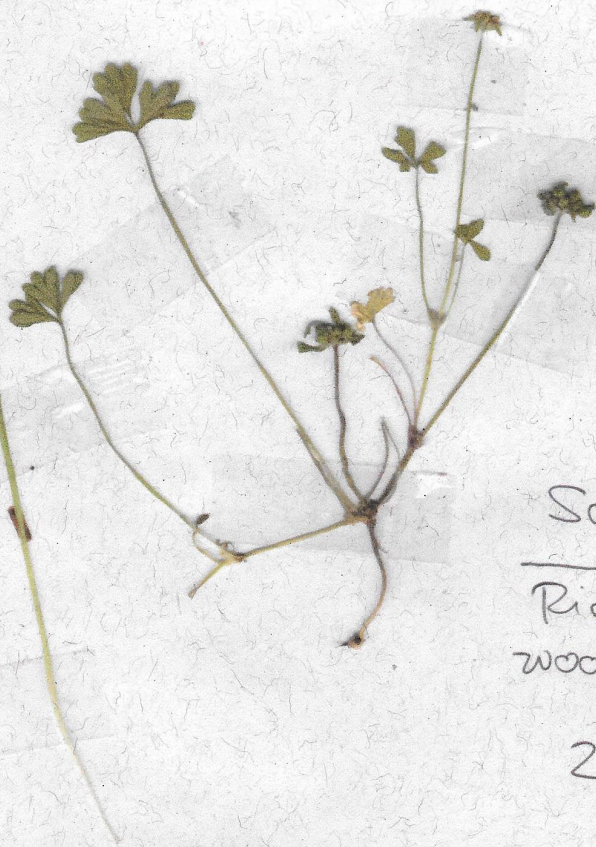
Deschampsia kingii ? \*

Rio Fontaine, on grassy bank  
close to river.

21/1/99

\* culms ca 95cm long, plant densely  
cespitose. Assuming that culm length  
of 11.5m given in Moore (1983) is a  
mistake.

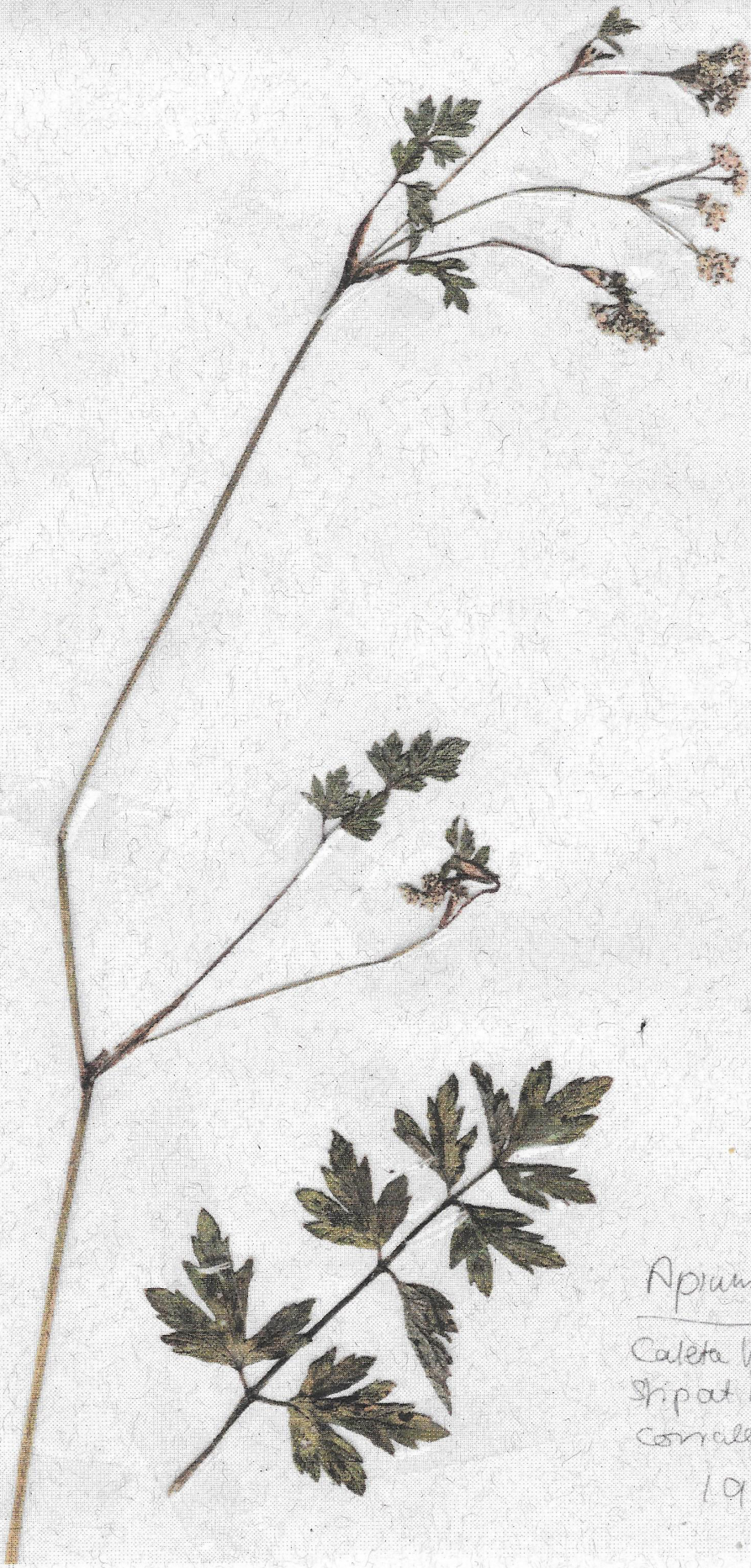




Schizaelema ranunculus  
Rio Fortaine, disturbed  
woodland floor.

21/1/99





Apium australe

Caleta Maria, olive  
Ship at top of beach near  
corrales.

19/1/99



Id notes

yellow petals, straight style

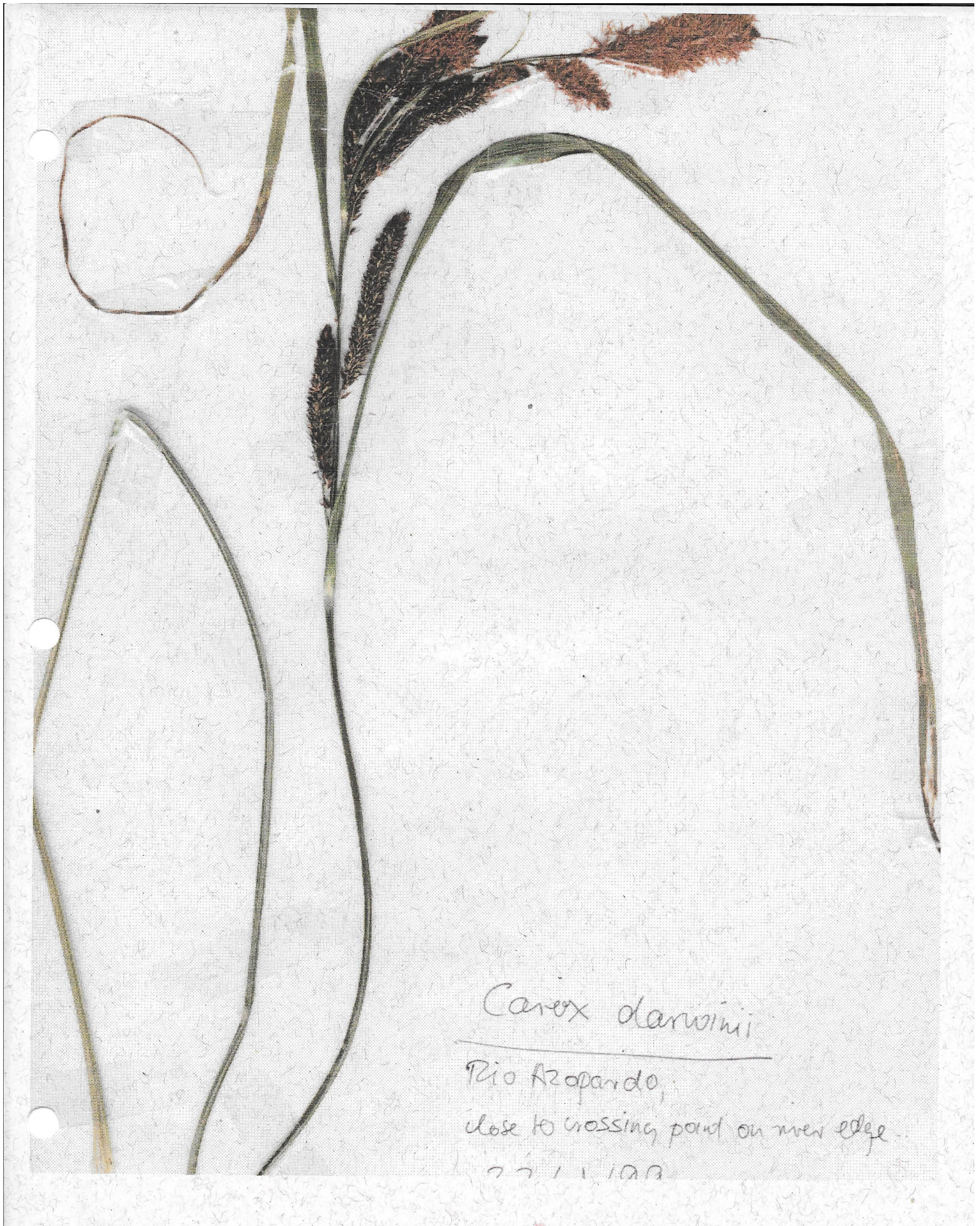


Viola magellanica

Rio Fontaine, disturbed  
woodland floor.

21/1/99





*Carex darwini*

Rio Azopardo,  
close to crossing point on river edge.

27.1.1973





Misodendrum brachystachyum

Rio Azopardo valley.  
On Nothofagus betuloides, 50m  
above river on wooded slope. Edge of  
wood and heathland (Emp. nr-Mar

22/1/99





Id notes

unmistakable.



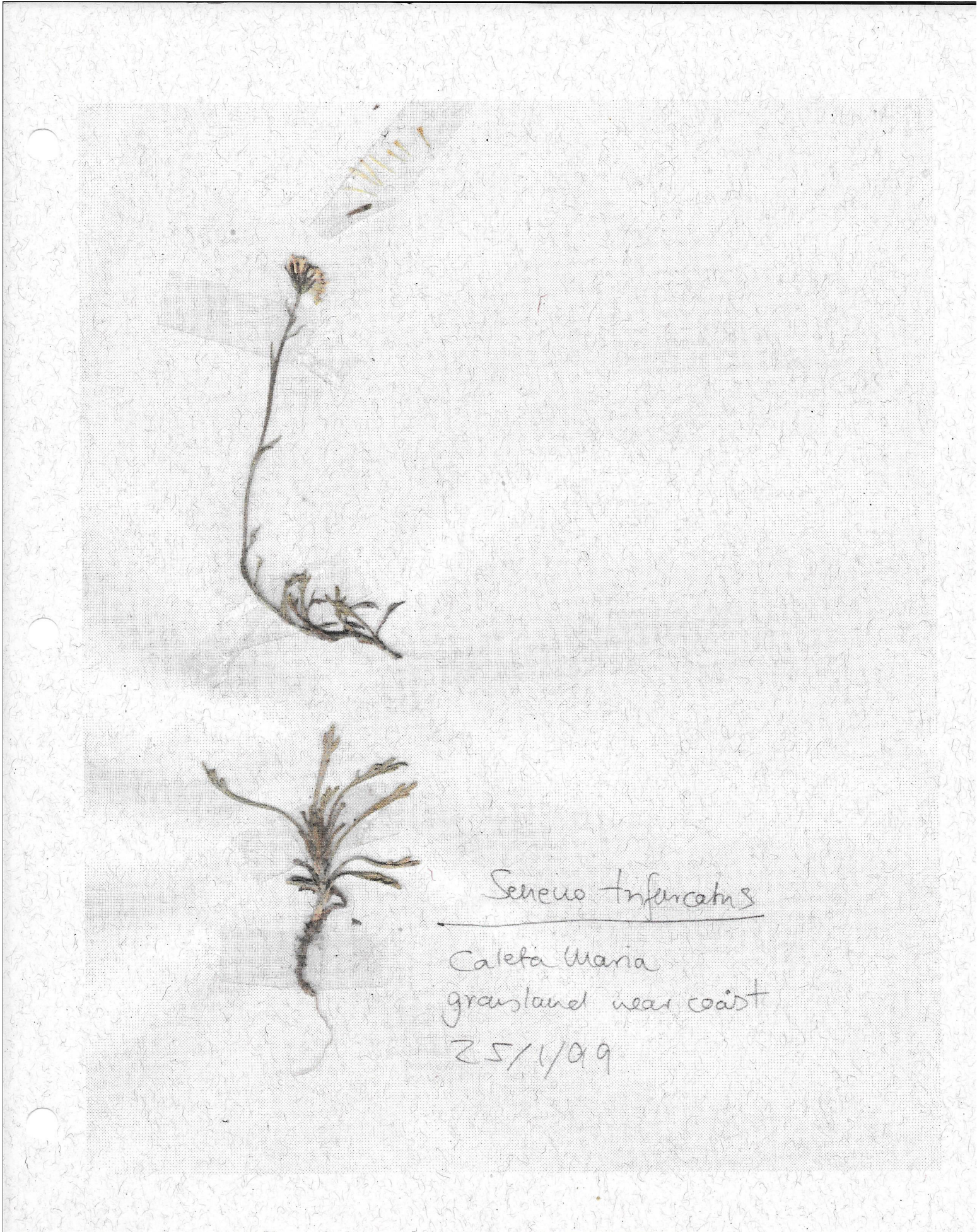
Pratia repens

Caleta Mana, short coastal  
grassland.

16/1/99

short coastal grassland.





Senecio trifurcatus

Caleta Maria  
grassland near coast

25/1/99





1st notes

♂ flowers on long stalks,  
♀ flowers near - sessile.  
3 sepals, fruit ~~2-lobed~~  
split into 3 mericarps.

Dryopers glandulos

Rio Fontaine  
woodland in mer bend on S. side  
of river, past lakes.

30/1/99





Drapetes muscosus

Rio Fontaine  
rocky outcrop S of river near  
lakes.

30/1/99





Scirpus cernuus

Rio Fontaine, low-lying  
part of Mississippi River bog.

2/1/99





Trisetum spicatum

Rio Azopardo

In dune hollow with Marsippospermum  
grandiflorum fuscoides and Poa stellata

11/2/99



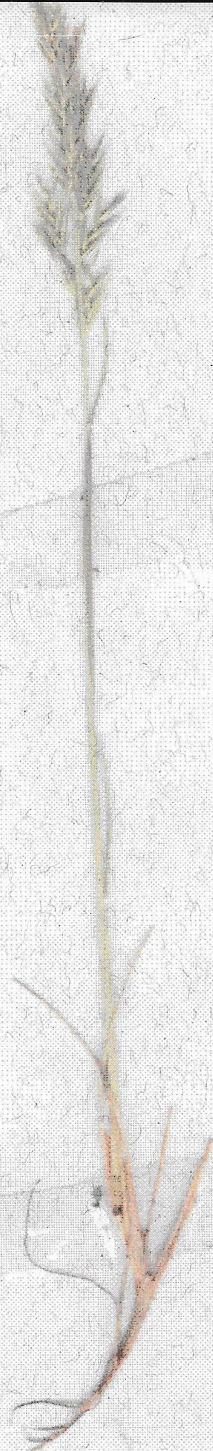


Senecio smithii

Catara Mania  
forest edge, top of beach, ~~near~~  
edge of stream.  
near the beach corals.

19/1/99





Festuca magellanica  
Caleta Maria  
sand dunes, top of beach  
17/1/99





Lebetanthus myrsinitis

Rio Fontaine

woodland on N. bank of river  
near crossing point

Scrambling up trunk of Nothofagus pumila

4/2/99